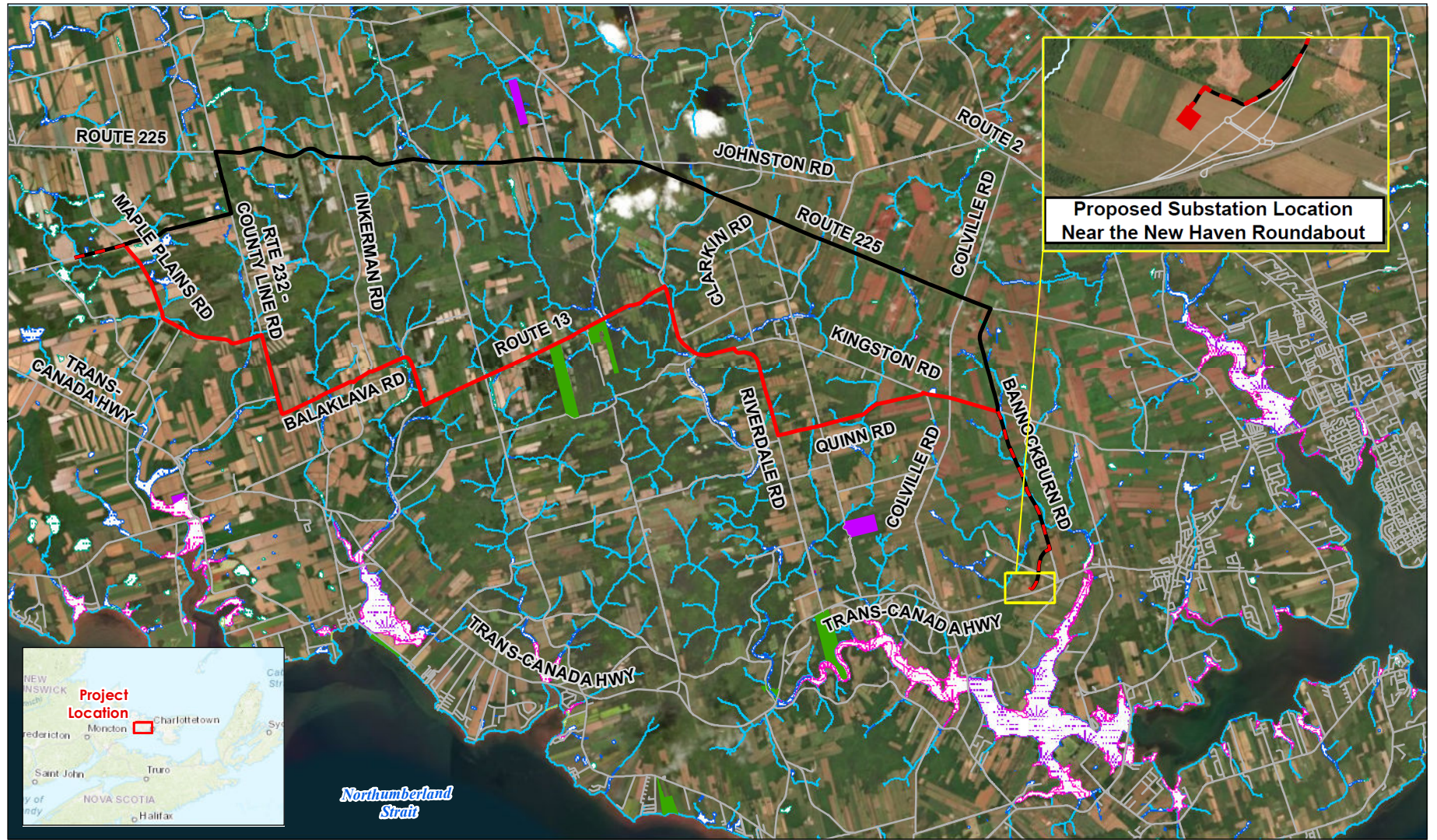


\\Cd1181-401\workgroup\1214\active\121415179\gis\mapping\mxd\121415179-002_MECL_Y-119.mxd Revised: 2020-01-24 By: mhukrinshepu



**Proposed Substation Location
Near the New Haven Roundabout**



Northumberland Strait



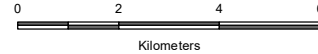
Transmission Line

- Northern Route
- Southern Route
- Shared Route Sections

- Proposed Substation
- Road
- Watercourse
- Provincial Park
- Protected Area

Wetland

- Land Locked Pond
- No Open Water or Marsh
- Open Water or Marsh
- Salt or Brackish Marsh
- Salt Water
- Sand Dune



Notes

1. Coordinate System: NAD 1983 CSRS Prince Edward Island
 2. Data Sources: www.gov.pe.ca/gis
 3. Background: Source: Esri, DigitalGlobe, GeoEye, Earthstar Geographics, CNES/Airbus DS, USDA, USGS, AeroGRID, IGN, and the GIS User Community
- Sources: Esri, HERE, Garmin, Intermap, increment P Corp., GEBCO, USGS, FAO, NPS, NRCAN, GeoBase, IGN, Kadaster NL, Ordnance Survey, Esri Japan, METI, Esri China (Hong Kong), (c) OpenStreetMap contributors, and the GIS User Community

Project Location
Queens County
Prince Edward Island



121415179-002

Client/Project
Maritime Electric Limited
Proposed Y-119 Transmission Line
and Clyde River Substation Project

Figure No.

2.1

Title

**Project Location - Y-119
Transmission Line and Clyde River
Substation Project**